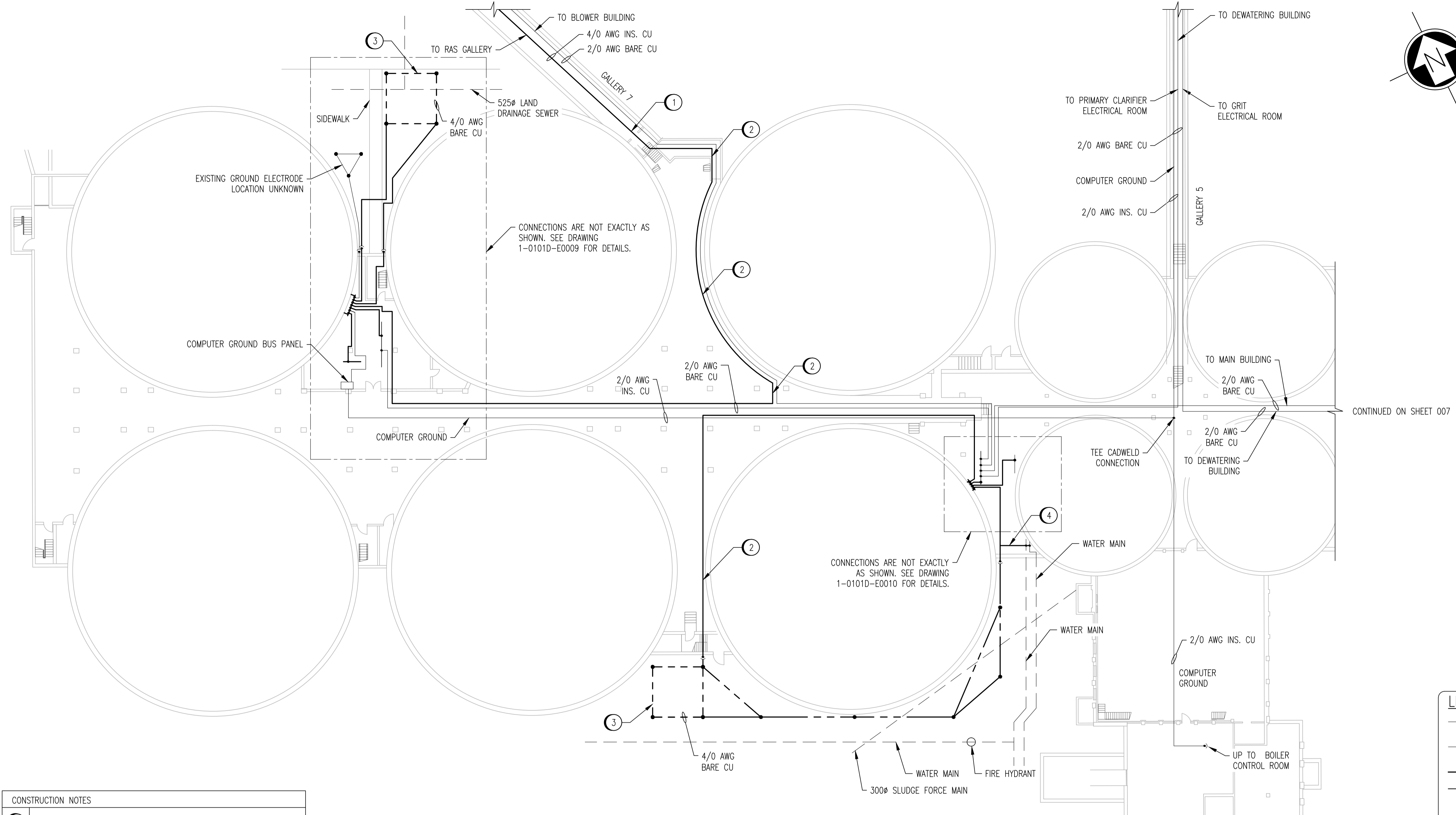
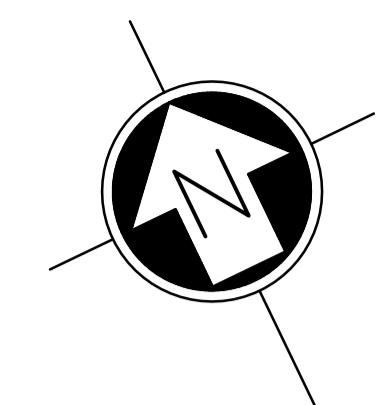


CONTINUED ON SHEET 005

CONTINUED ON SHEET 001

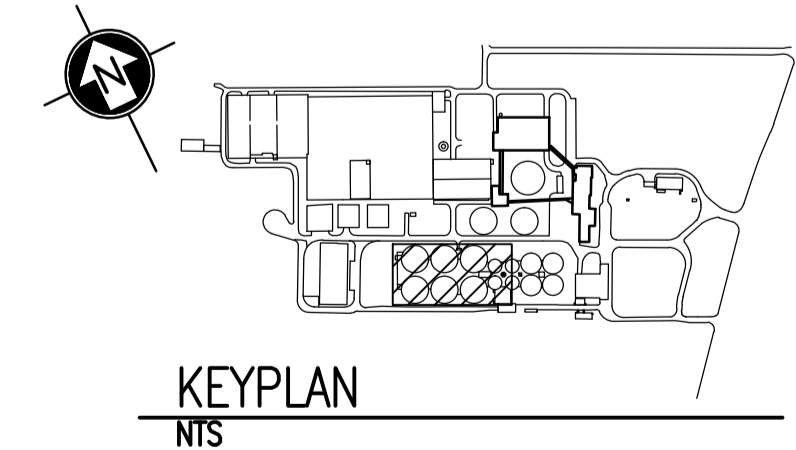


DIGESTER TANKS - LOWER LEVEL - WEST
 SCALE: 1 : 250

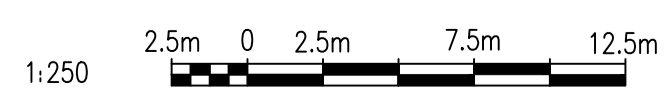
- CONSTRUCTION NOTES**
- 1 PROVIDE 4/0 AWG CONDUCTOR FROM DIGESTER WEST ELECTRICAL ROOM TO RAS GALLERY. LOCATE IN EXISTING CABLE TRAY WHERE AVAILABLE. INSTALL IN 27mm PVC CONDUIT WHERE NOT IN TRAY.
 - 2 INSTALL CONDUCTOR IN 27mm PVC CONDUIT AT LEAST 1.5m ABOVE FINISHED FLOOR.
 - 3 PROVIDE GROUND ELECTRODE AS SHOWN AND CONNECT TO GROUND BUS AS SHOWN.
 - 4 PROVIDE 2/0 AWG CONDUCTOR TO BOND PIPES ENTERING BUILDING (2 LOCATIONS) TO GROUND. CONNECT TO NEW GROUND CONDUCTOR.

LEGEND:

- EXISTING BURIED SERVICE
- EXISTING CONDUCTOR
- NEW CONDUCTOR
- CONDUCTOR ABOVE ELEVATION SHOWN
- GROUND ROD
- CONNECTION
- ↗ ELEVATION CHANGE



- NOTES:**
1. THE ELEVATION OF THE GROUNDING CONDUCTORS AND ELECTRODES VARIES AND IS SHOWN ON A SINGLE LEVEL TO EASE THE UNDERSTANDING OF HOW THE GROUNDING SYSTEM IS INTERCONNECTED. SEE LEGEND FOR LINETYPES OF CONDUCTORS AT DIFFERENT ELEVATIONS.
 2. THE LOCATION AND ROUTING OF EXISTING GROUNDING CONDUCTORS IS APPROXIMATE.



NO.	REVISIONS	DATE	DESIGN	CHECK
00	ISSUED FOR TENDER, BID OPP. 845-2012	2012/10/30	TMC	CJR

SNC-LAVALIN INC.
 148 Nature Park Way
 Winnipeg, MB, Canada R3P 0X7
 204-786-8080

DESIGNED BY: T. CHURCH
 DRAWN BY: S. COATES
 SCALE: 1:250
 DATE: 2009/11/20
 CONSULTANT NO.: 113312-0000-47DD-0006

CHECKED BY: C. REIMER
 APPROVED BY: C. REIMER
 RELEASED FOR CONSTRUCTION BY: B. STATION
 DATE: 2012/10/31

ENGINEER'S SEAL

THE CITY OF WINNIPEG
 WATER AND WASTE DEPARTMENT

NORTH END WATER POLLUTION CONTROL CENTRE
 GROUNDING UPGRADES
 SITE PLAN
 GROUNDING CONDUCTOR ROUTING

CITY DRAWING NUMBER: 1-0101A-E0011
 SHEET: 006
 REV.: 00
 SIZE: A1